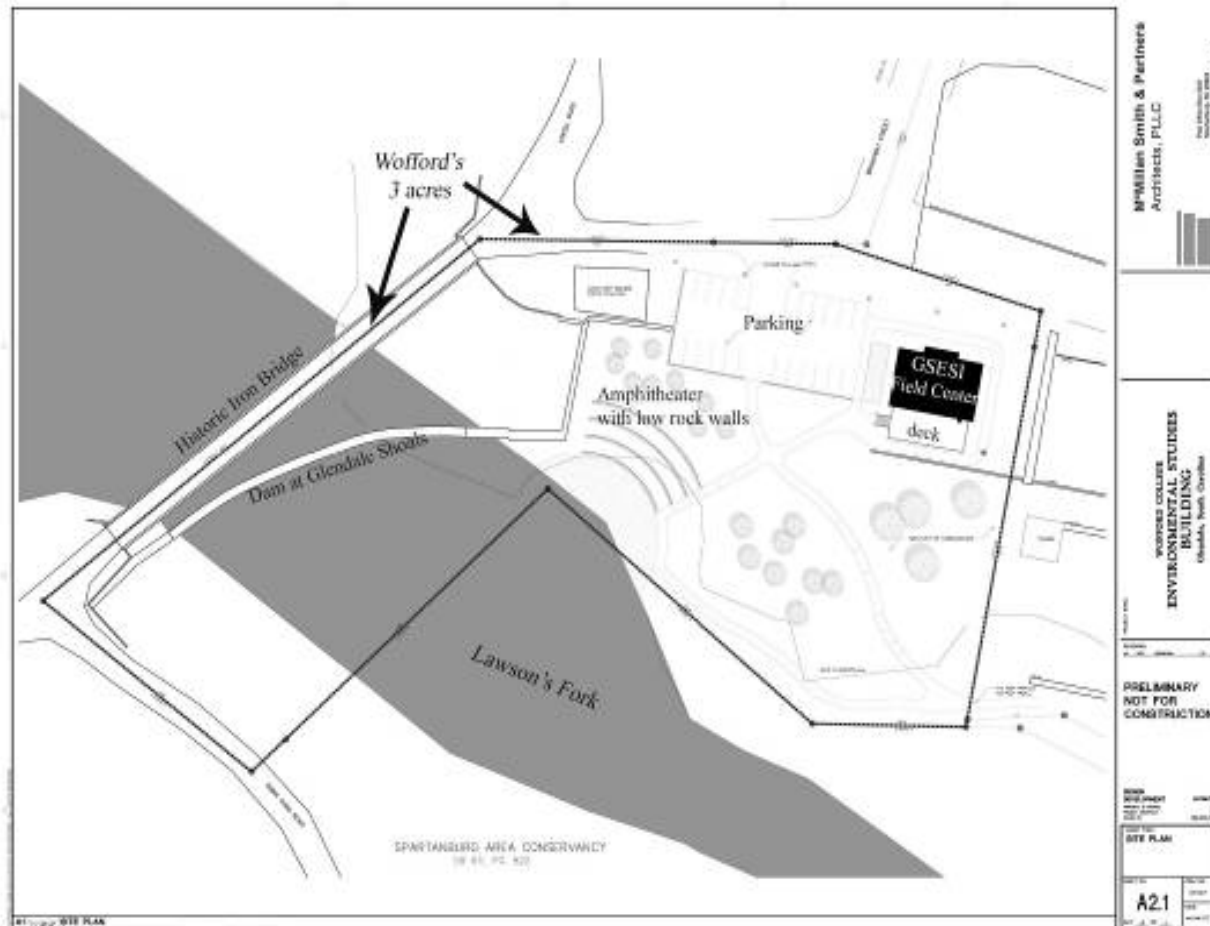


Wofford's  
Environmental Studies  
Program  
Headquartered  
at  
Glendale

# Site plan for Wofford's Glendale Shoals Environmental Studies Institute (Mill Office in black)



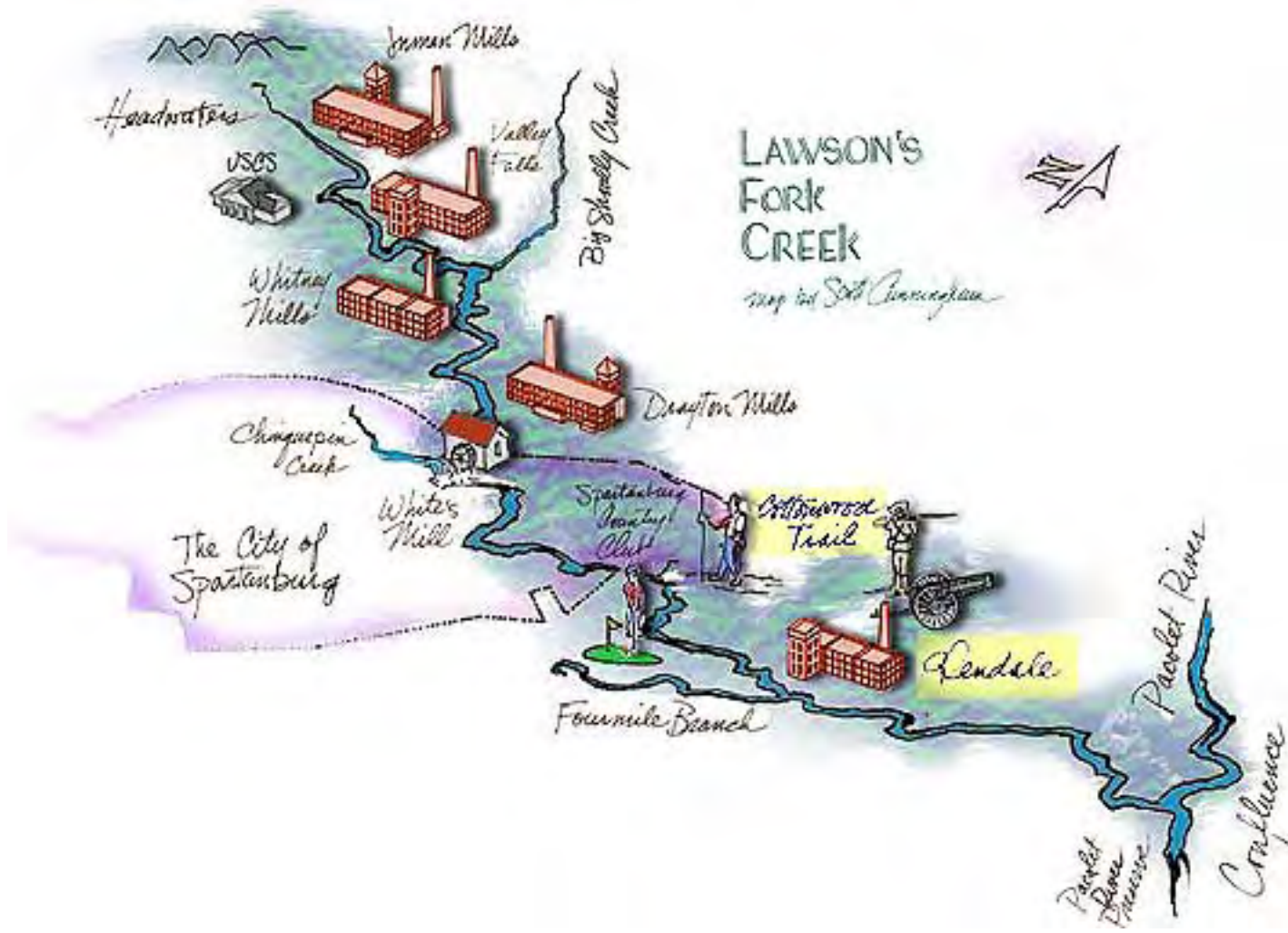
**Aerial view of the Glendale Mill site, the Lawson's Fork dam, the river bed (blue), and the property lines (Yellow) of Wofford College, the Palmetto Conservation Foundation, and SPACE**



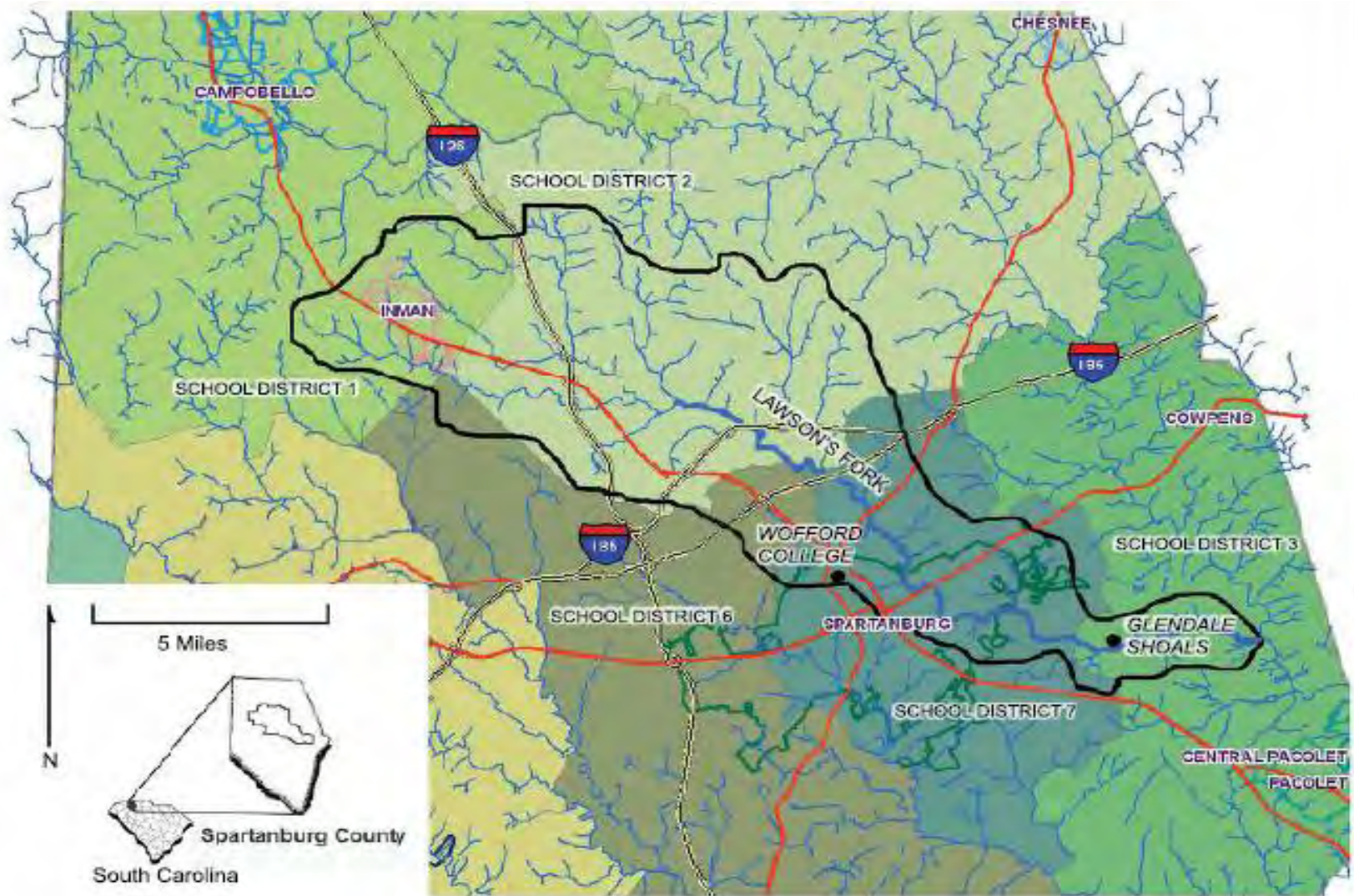
# Aerial view of Glendale Mill village



# Lawson's Fork Creek showing the locations of the five cotton mills. Dams are at Valley Falls,



# The Lawson's Fork watershed showing Spartanburg County school districts



# The Glendale Mill Office



# Side view of Glendale Mill Office





# 1920 photo showing Mill Office and dam with four foot "apron"



# Current Glendale Mill site showing stack, original Mill tower, 1902 Mill tower, and Mill Office



# View of Lawson's Fork Shoals framed by Mill Office and tower



View of Lawson's Fork Shoals from inside the Mill Office. Opposite bank is SPACE property



Mill Office center room that will be renovated to become lobby, lecture hall, and meeting space



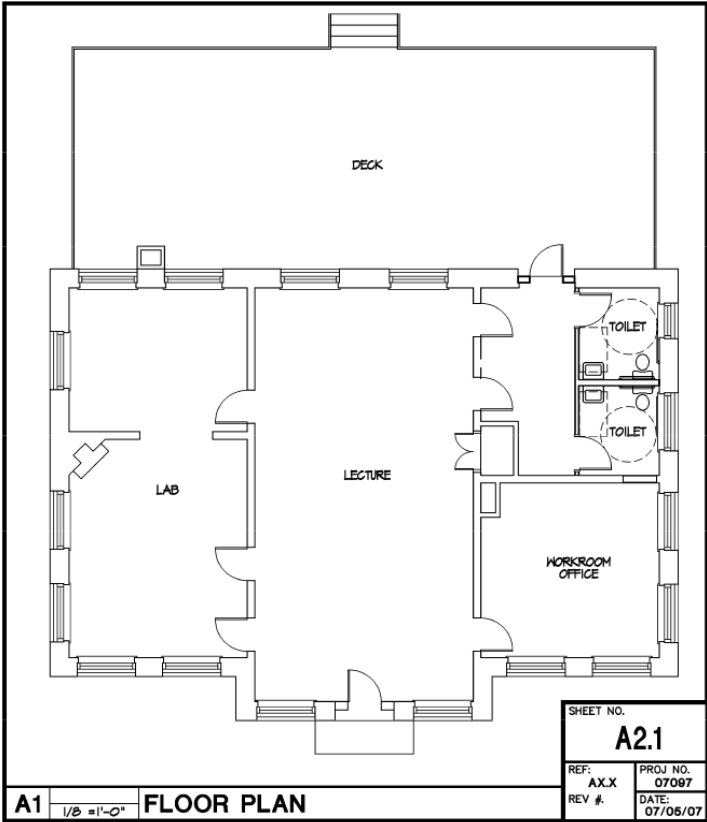
# Safe in Mill Office center room



Mill Office side room that will be renovated to be Environmental Studies office and library



# Tentative Mill Office floor plan showing rear deck



**A1** 1/8" = 1'-0" **FLOOR PLAN**

**M<sup>c</sup>Millan Smith & Partners**  
Architects, PLLC

**WOFFORD COLLEGE**  
ENVIRONMENTAL STUDIES  
Glendale, SC

X-UPDATE

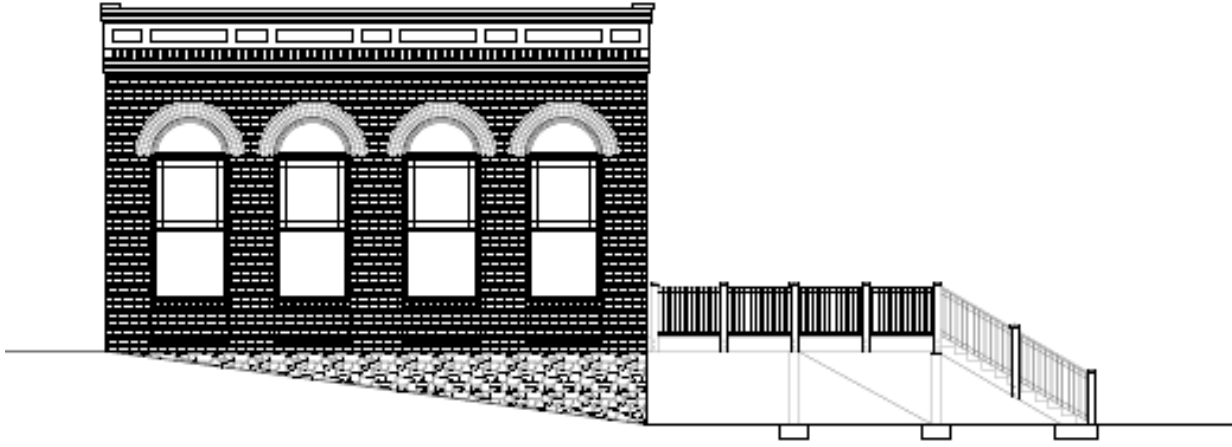


# Restored/renovated Mill Office, front elevation



**SOUTH ELEVATION**

# Restored/renovated Mill Office, side elevation showing deck



WEST ELEVATION

**View of tower (not leaning!) and Mill Office from center  
of Mill site. Lawson's Fork is in the background**



# View of bridge, dam, and shoals from “backyard” of Mill Office



08/2008

Top of dam from old iron bridge; shoals; tower in background; Mill Office hidden



Shoals with Mill Office and tower in background (view from SPACE property)



Old iron bridge at Glendale. Restoration is planned, but still only for pedestrians and bikes



# Glendale postcard showing Mill Office (1920)





# Bivings (D.E. Converse) house



# Glendale Mill fire, March 20, 2004



2004

# Glendale United Methodist Church

